

EuropeLIFT

optimize reaching

TM18GTi

A high quality trailer boom lift with the most modern control technology and excellent work performance



- Working Height: 18,1 m
- Max. Platform capacity 220 kg
- Max. outreach: 10,5 m (100 kg)
- Articulated telescopic lower and upper boom with LCD-display, plus wifi remote live service diagnostic (standard)
- Flyjib
- Auto home function (standard)
- 230V & gasoline engine (Honda/Briggs) power source (standard)
- Auto level chassis (optional)
- Compact transport dimensions (Transport length 6.1m)



TRAILER MOUNTED BOOM LIFT

EuropeLIFT

TYP: **TM18GTi**

Technical data	TM 18 GTi
Working Height	18,1 m
Platform Height	16,1 m
Max. horizontal Reach	(100 kg) ca 10,5 m
Max. horizontal Reach	(220 kg) 8,1 m
Max. Platform Capacity	220 kg
Platform Rotation	355°
Flyjib	1.3 m
Platform Dimensions	1,2x0,8x1,1 m
Platform Rotation	2x45°
Transport Length	6,10 m
Transport Width	1,64 m
Transport Height	2,1 m
Total Weight 230V & Gasoline engine, wheel assist, platform rotator	2030 kg
Wheel assist	Standard
Outrigger footprint (width)	3,84 m (plate outer edge)
Gradeability	10%
Max. Speed	80 km/h
Tongue weight	100 kg
Energy chain	Inside profile

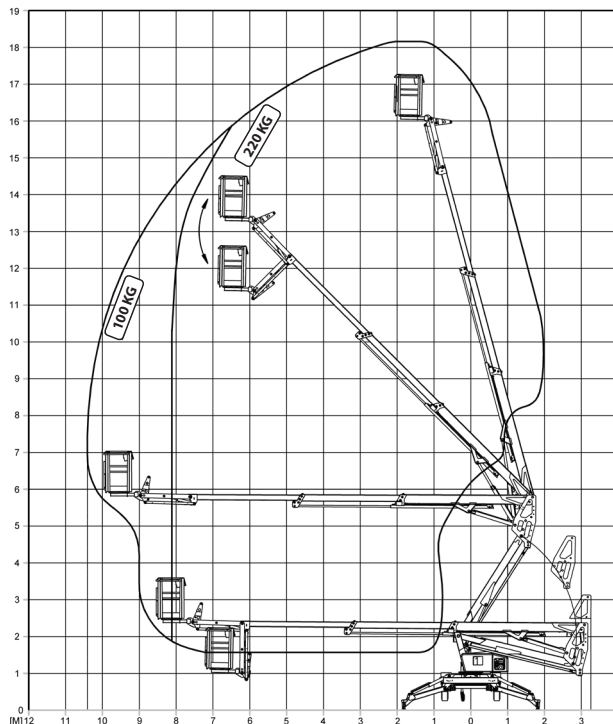


STANDARD FEATURES

- Articulated construction with 3-section telescope upper boom system with moment control system
- 1,3m flyjib
- Wheel assist with hydraulic coupling
- Autohome and Platform rotator
- Dual power source 230 V & gasoline engine
- Hydraulic speed control of the engine
- Platform leveling with 3° Auto adjust
- Alu basket with guard rail and tool tray
- Platform controls with LCD function display, plus Wifi remote live service diagnostics
- Proportional, electro-hydraulic fine control by fingertip joysticks
- Horn and Anti-Collision control
- Ground and platform control
- Chassis monitoring with 1° with acoustic. warning signal
- Ground pressure monitoring on outrigger plates with acoustic and visual warning signal
- 230V AC power line to the platform, hour meter
- Protective cover on control panels
- All-round underrun frame, type approval, CE
- All around position LED Lights

OPTIONS

- Custom colour
- Battery power source 24V 220Ah
- GRP work platform with tool tray
- 400x400x30 mm plastic outrigger pads
- Air & water line to platform
- Stroboscope warning lights on outriggers



EuropeLIFT

Adresse: H-8992 Bagod, Gépállomás u. 9.

Tel: +36 20 9474 767

Internet: info@europelift.com | www.europelift.com